



Kings Avenue, Clapham, SW4

2 bedroom flat for sale

£475,000

Share of Freehold

Property Details

This charming two double bedroom, two bathroom apartment is peacefully positioned on the first floor of a secure and modern purpose-built development. Thoughtfully laid out, the home offers a bright open-plan kitchen and reception room with sleek white cabinetry, generous worktops, integrated white goods and excellent storage, with large glazing opening onto a Juliette balcony that fills the space with natural light. Both bedrooms are comfortable doubles with built-in storage cupboards; the principal bedroom enjoys its own en-suite with a modern shower cubicle, while the second bedroom provides flexibility as a guest room or home office. The main bathroom is finished with a contemporary white suite, including a shower over the bath, mirrored storage cupboards and a heated towel rail. Further benefits include a utility cupboard in the hall, well-maintained communal grounds, friendly neighbours, secure entry and high energy efficiency. There is also the added convenience of a bus stop directly outside the building, making for an easy commute particularly in the darker months.

Features

- Two double bedrooms
- Two Bathrooms
- Juliette balcony
- Well-maintained communal grounds
- Secure modern building
- Nestled between Clapham and Brixton
- Abbeville Village a ten-minute stroll
- Northern and Victoria Lines
- Share of freehold
- Chain-free

Council tax band D EPC rating B (82)



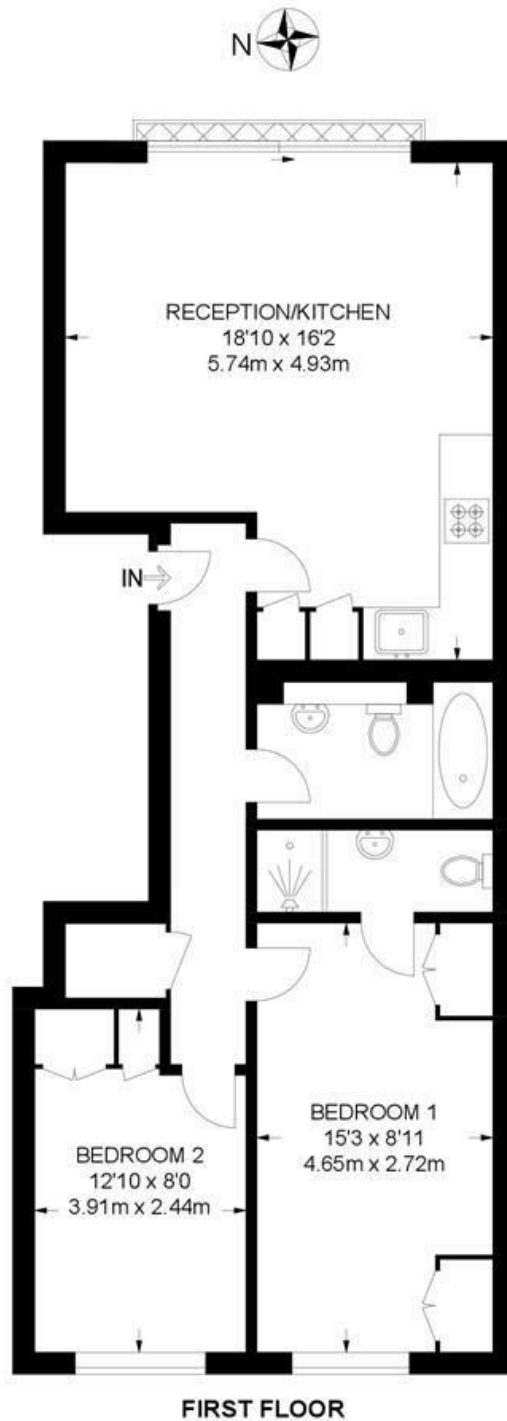


Kings Avenue, Clapham, SW4

Kings Avenue, SW4

2 Bedroom Flat

APPROXIMATE GROSS INTERNAL AREA: **671 SQ FT / 62.3 SQ M**



While we try our very best, floor plans are produced as a guide only and we take no responsibility for the precise accuracy with which any property is represented.

Kings Avenue, Clapham, SW4

